

# SHRINE HOURS AND DEVOTIONAL OPPORTUNITIES

## Apparition Chapel, Apparition Oratory, and the Shrine Grounds

Daily ..... 7:00 a.m. - 7:00 p.m.

## Mass

Daily & Sunday ..... 11:00 a.m.

Tuesday & Saturday ..... 8:30 a.m.

Wednesday ..... 5:45 p.m.

Sundays (May-October) ..... 8:30 a.m.

## Sacrament of Reconciliation

Daily ..... 10:00 a.m., after 11:00 a.m. Mass, and 2:00 p.m.

Saturday ..... 9:15 a.m.

## Devotional Prayer

Rosary ..... Daily | 10:30 a.m.

Adoration of the Blessed Sacrament. .... Daily | 12:00 - 3:00 p.m.

Chaplet of Divine Mercy ..... Daily | 3:00 p.m.

Family Rosary ..... Sunday | 10:30 a.m. (Livestreamed)

Sacred Heart Devotions ..... First Friday | after 11:00 a.m. Mass

Fatima Devotions ..... First Saturday | after 8:30 a.m. Mass

Healing Service ..... Last Saturday | after 11:00 a.m. Mass

## Adele Brise Day - Ninth of Each Month

Anointing of the Sick ..... after 11:00 a.m. Mass

## Gift Shop and 1885 Schoolhouse Café

Monday – Saturday ..... 9:00 a.m. - 4:00 p.m.

Sunday ..... 12:30 p.m. - 4:00 p.m.

*CLOSED: New Year's Eve & Day, Good Friday, Easter, Thanksgiving Thursday & Friday, and Christmas Eve & Day*

## History Center

May – October ..... 7:00 a.m. - 5:00 p.m.

November – April ..... 9:00 a.m. - 4:00 p.m.

*For updates to this regular schedule, please visit [championshrine.org/updates](http://championshrine.org/updates)*



920.866.2571

4047 Chapel Drive, New Franken, WI 54229

[www.championshrine.org](http://www.championshrine.org)

Rev.09/22



# WELCOME TO CHAMPION SHRINE Map & Self-Guided Tour



## OUR LADY'S MESSAGE TO ADELE

OCTOBER 9, 1859

"I am the Queen of Heaven, who prays for the conversion of sinners, and I wish you to do the same. You received Holy Communion this morning and that is well, but you must do more. Make a general confession, and offer communion for the conversion of sinners. If they do not convert and do penance, my Son will be obliged to punish them. What are you doing here in idleness, while your companions are working in the vineyard of my Son? Gather the children in this wild country and teach them what they should know for salvation. Teach them their catechism. How to sign themselves with the sign of the cross, and how to approach the sacraments. That is what I wish you to do.

*Go and fear nothing. I will help you."*

See adjacent map of  
Rosary Walk and Stations



Map of Rosary Walk and Stations of the Cross



Please Respect Neighboring Properties

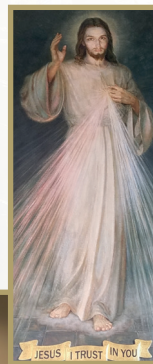
CHAPEL DRIVE

## 1 MOTHER OF MERCY HALL

Mother of Mercy Hall is one of the Shrine's largest religious gathering spaces. Seating around 1,100 people, the hall welcomes large Masses, Catholic speakers, conferences, and pilgrimage groups. Near the altar, see beautiful stained glass window depictions of Our Lady's apparition to Adele and St. Joseph the Worker with the Child Jesus.

Additional devotional spaces within Mother of Mercy Hall include:

- A full-size canvas replica of the same Divine Mercy image that hangs in the Chapel of the Miraculous Image of the Merciful Jesus and Tomb of St. Faustina in Krakow, Poland.
- A full-sized replica of Michelangelo's Pieta, one of only 100 in the world authorized by the Vatican for reproduction.
- Four large Rosary banners depicting the sorrowful, joyful, glorious, and luminous mysteries.



## 4 APPARITION ORATORY

The Apparition Oratory (located below the Apparition Chapel) is an underground place of prayer in which visitors can have an intimate encounter with our Blessed Mother. It is also home to over 22 relics, including the relics of all 12 Apostles, St. Faustina, St. Teresa of Calcutta, and St. Pope Pius the X.

The Oratory was constructed when the current chapel was built as a way to emphasize the experience of Mary's presence on these sacred grounds.

The Oratory is an essential element to the Shrine experience as its focus revolves around Mary's appearance near this location, allowing pilgrims the chance to connect with God through the intercession of Mary.



*There is access for those with disabilities around the back of the Chapel near the access to the outdoor stations of the cross.*



## 2 HISTORY CENTER

The History Center provides information regarding the history and heritage of the Shrine.

It is also home to our history video that chronicles the life of Adele Brise and development of the grounds..



## 5 ROSARY WALK AND STATIONS OF THE CROSS

The outdoor Rosary Walk, located behind the Apparition Chapel, provides an opportunity for quiet prayer and reflection.

The path along the Rosary Walk outlines the original grounds in which faithful pilgrims came to pray for the protection of Mary during the horrors of The Great Fire in 1871.

Along the Rosary Walk path one can see the Roadside Chapel (similar to the original one built on the apparition spot) and various grottos to other well-known approved apparitions and saints around the world.

Just off the Rosary Walk is the Stations of the Cross pathway which provides another devotional opportunity.



If you are interested in helping to ensure the Shrine grounds continue to be a peaceful place for prayer and reflection, please consider making a gift at [www.championshrine.org/give/](http://www.championshrine.org/give/)

## 3 APPARITION CHAPEL

The current Apparition Chapel was built in 1941 and is the fourth Chapel to be built on the grounds of the National Shrine.

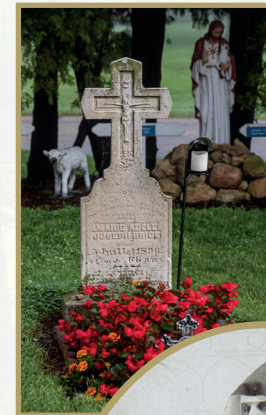
The Shrine and the Diocese of Green Bay understand the sacred space in and around the Apparition Chapel and lower-level Oratory to be where the Blessed Virgin Mary appeared to Adele.



## 6 ADELE'S GRAVESITE

Adele Brise, the visionary who saw the Blessed Virgin Mary, is buried next to the Apparition Chapel alongside some of her companions and children from their school.

The holiness of Adele's life is known by those who were affected by her life; please consider praying for the intercession of Adele in time of need in hope that her cause for canonization will one day be opened.



## 7 GIFT SHOP & 1885 SCHOOLHOUSE CAFÉ

The 1885 Schoolhouse building is the oldest building on the Shrine's grounds.

This structure is the actual school where Adele and her fellow Sisters housed and taught the children their faith.

Today, this building reflects the heritage of what took place in this rural countryside while also hosting our gift shop and café.

